



**RUSSIA  
KALININGRAD  
2014**

We sincerely and competently care of your cargo

- [About us](#)
- [Our philosophy](#)
- [Our services](#)
- [Your benefits](#)
- [Our clients and partners](#)
- [Contacts](#)

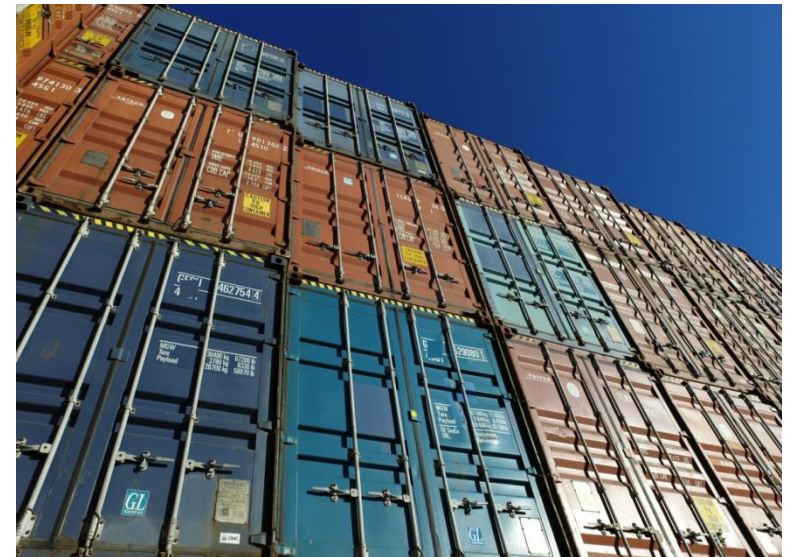
We sincerely and competently care of your cargo

## About us



- § Rechdan Shipping Company was established in 1991 as a joint venture between Russian company “Western River Shipping Company”, Danish JSC company “DFN Olie” and Lithuanian CJSC “Kurs”.
- § At the beginning the company operated two second hand vessels with capacity 2000 DWCC per each.

- § 1992 – Participation in withdrawal of Soviet Army state program. We delivered containers for military men families from Germany to Russia. For this purpose we purchased own container fleet (70 x 20 containers).
- § 1994 - Company's fleet expanded by another two vessels Anna Kern & Darbo same capacity as above.
- § 1994 - We were able to place the order for building a new vessel with capacity 4000 mt in N. Novgorod.



We sincerely and competently care of your cargo

About us



- § 1995 - We started activities as a agent for “Kursiu Linija” and “P&O Containers”.
- § 1996 - The vessel – “Mologa” was launched on “Krasnoe Sormovo” shipyard.
- § 2001 - Purchased 14 trucks and started activities as a road carrier.
- § 2003 – We became a full member of association of international carriers.
- § 2004 - The Company won a competition “The best carrier of the Kaliningrad area”.
- § 2009 - The Company becomes the agent of the regular feeder line Unifeeder.
- § 2012 - We started activities as customs broker



We sincerely and competently care of your cargo

## Our philosophy



### Mission

To establish and maintain high quality standards of forwarding and customs services of partner companies.

### Purpose

To offer our customers such a level of services, so they could give all the logistics and customs clearance us to outsource and pay maximum attention to their core business.

Caring for the growth of your business,  
we grow ourselves!



We sincerely and competently care of your cargo

## Our services

Our activities are guided by the following principles:

- § Legality and transparency.
- § Efficiency in the provision of information and solving problems.
- § Implementation of the services has a planned character.
- § Complexity (delivered door-to-door).
- § Individual approach.

In order to offer you the highest level of service:

- § In addition to the main office in Kaliningrad, we have offices on the territory of the Baltic Stevedoring Company, Kaliningrad Sea Commercial Port.
- § We cooperate directly with container terminals, with the agents of ocean and feeder lines.
- § In 2012, the company received a Certificate on inclusion in the Register of customs representatives.
- § Each carrier is working with us to insure its liability for 100,000 Euros.
- § For each client, taking care of his personal manager.
- § Our schedule is 7 days a week, 24 hours a day.

We sincerely and competently care of your cargo

Our services

Our services:

- § Port forwarding
- § Sea container shipping
- § Customs clearance of cargo (in all customs posts of the Kaliningrad region)
- § LCL forwarding



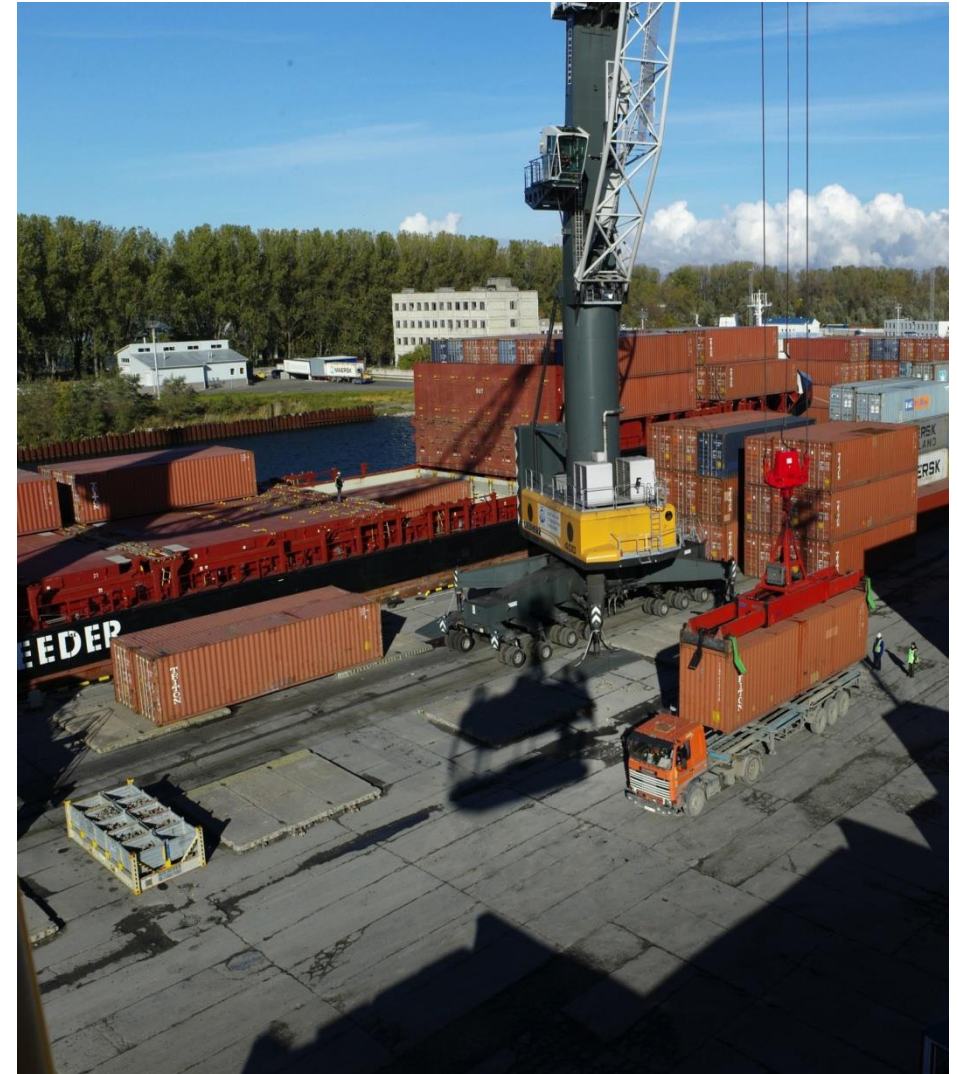
- § Ship's agency service
- § General cargos forwarding
- § Road transport services
- § Selecton of crews

We sincerely and competently care of your cargo

Our services

### Port forwarding:

- § Processing information related to the expected arrival of goods
- § Working with the entire package of necessary commodities and transport documents
- § Smooth interaction with state regulatory agencies and customs authorities
- § The organization of in-port operations
- § Customs clearance
- § The planned removal of your containers from the sea ports of Kaliningrad and Baltijsk
- § Control of cargo delivery and return of empty equipment
- § Paying bills of container lines and terminals and their subsequent exhibiting at customers





We sincerely and competently care of your cargo

Our services

### Customs clearance:

- § Advance preparation of documents and advising on customs clearance
- § Customs declaration for the goods
- § Representing the interests of the recipient during the passage of all types of inspections related to the customs clearance of goods
- § Obtaining permits in the area of phytosanitary and veterinary control



Rechdan Shipping Company included in the Register of customs representatives (certificate number 0483/00 of 13 July 2012).

This means that, using our professional experience and well-established schemes of work, our company quickly and competently will make your customs clearance of imported or export goods.

We sincerely and competently care of your cargo

Our services

## Ocean Freight:

- § Free rapid calculation of the cost of freight containers to / from anywhere in the world
- § If the client wishes, we can arrange delivery of a container on a "door-to-door"
- § Organize a LCL (Less-Than-Container Load) ocean freight
- § At the request of the customer promptly provide information on the movement of container
- § Provide a comprehensive approach in the fulfillment of licensing and customs formalities



We sincerely and competently care of your cargo

## Your benefits

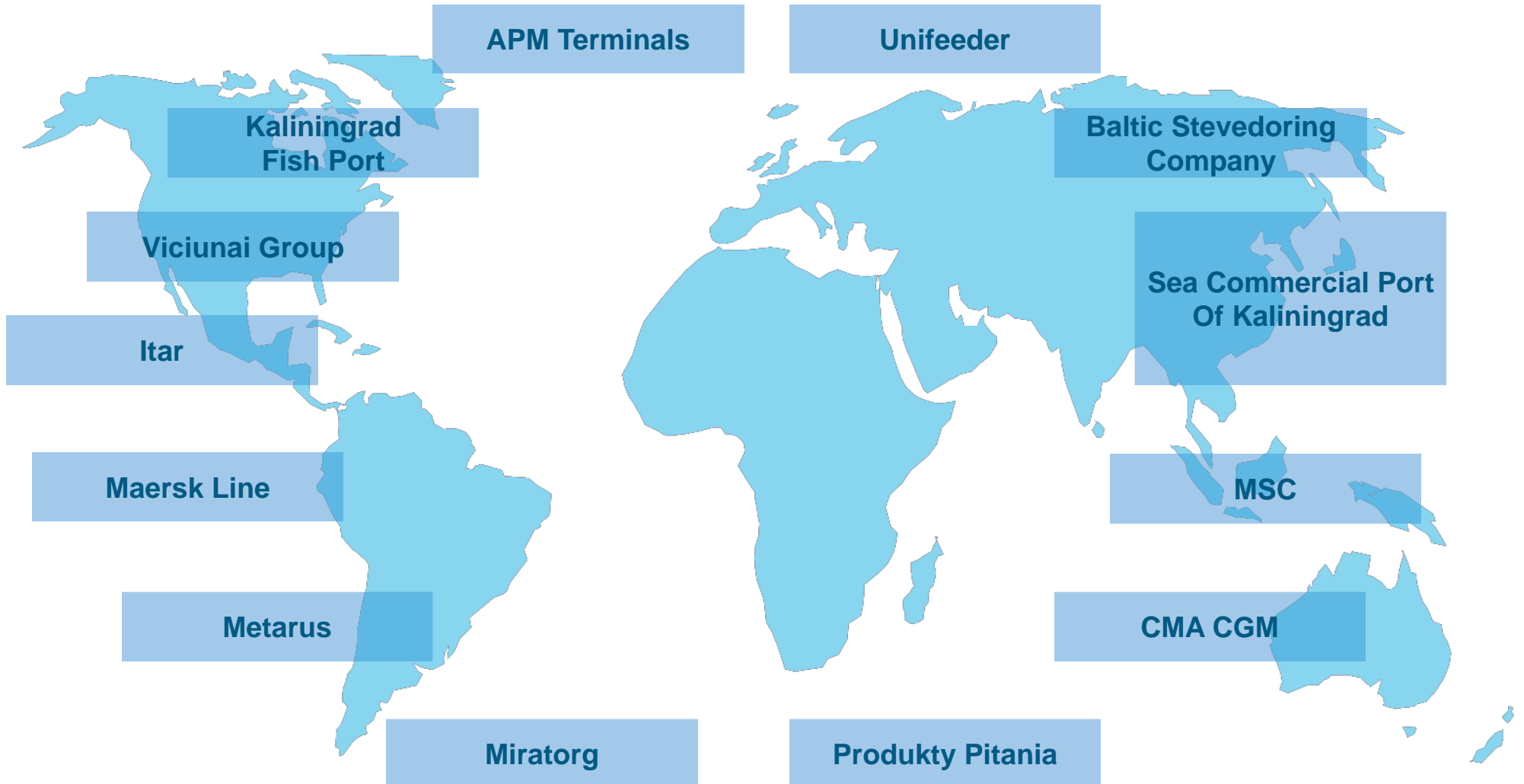
- § Customs clearance time - 1 day
- § Personal manager for each client
- § Reducing the costs of transport logistics
- § Saving you time, as a consequence - the money
- § Competent solution of non-standard questions



- § The possibility of credit conditions for payment of certain services
- § Individual approach to forming of the complex of services
- § Partnership with stevedoring companies

We sincerely and competently care of your cargo

Our clients and partners



APM Terminals

Unifeeder

Kaliningrad  
Fish Port

Baltic Stevedoring  
Company

Viciunai Group

Sea Commercial Port  
Of Kaliningrad

Itar

Maersk Line

MSC

Metarus

CMA CGM

Miratorg

Produkty Pitania

We sincerely and competently care of your cargo

## Contacts

Company main office in  
Kaliningrad:

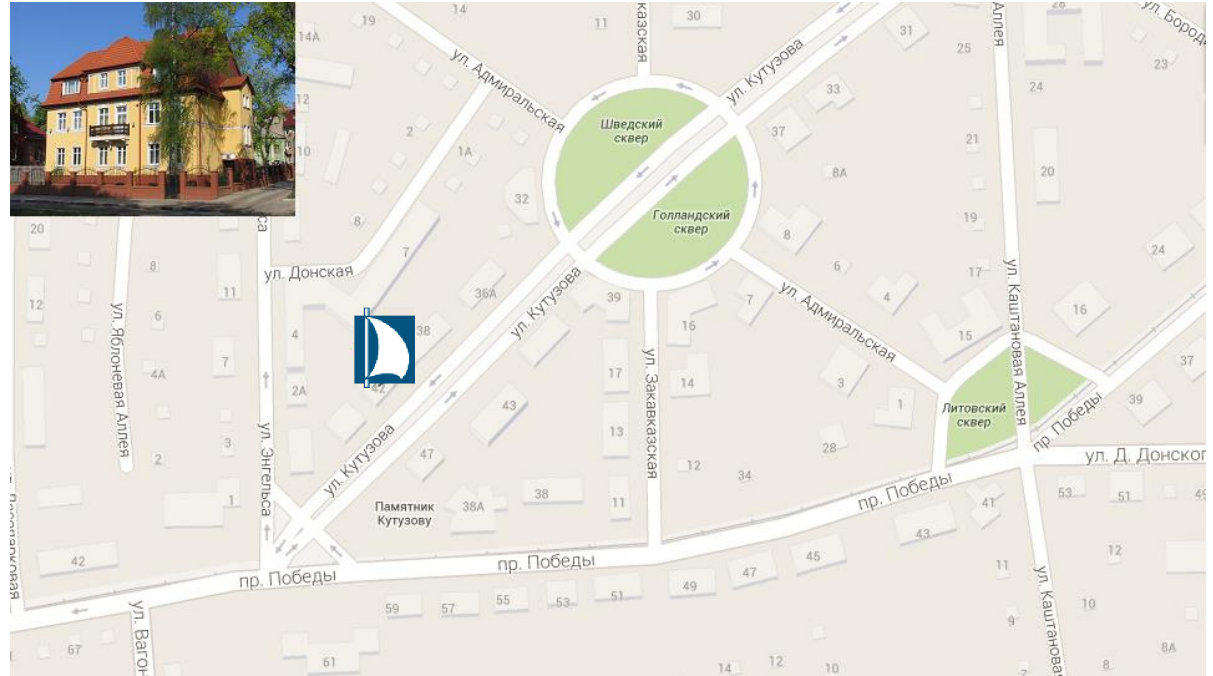
42, Kutuzova Str., 230010,  
Kaliningrad, Russia

Phone: +7 4012 214292

Fax: +7 4012 954242

Email: [postmaster@rechdan.com](mailto:postmaster@rechdan.com)

WEB: [www.rechdan.com](http://www.rechdan.com)



Office in the «Baltic Stevedoring Company» Ltd.:

17, Niznee Shosse, Baltysk,  
phone: +7 4014 561071, +7 921 7104283

Office in the territory of JSC «Kaliningrad Sea  
Commercial Port»:

24, Portovaya Str., Kaliningrad,  
phone: +7 4012 692120, +7 921 7100264

We sincerely and competently care of your cargo

## Contacts

### GENERAL MANAGER

Romanko Vladimir

phone: +7 4012 960900

E-mail: [romanko@rechdan.com](mailto:romanko@rechdan.com)

### DEPUTY GENERAL MANAGER

Stoyakin Gennady

phone: +7 4012 960900

E-mail: [stoyakin@rechdan.com](mailto:stoyakin@rechdan.com)

### SALES DEPARTMENT

Chief: Tokarev Alexander

phone: +7 4012 960900

E-mail: [tokarev@rechdan.com](mailto:tokarev@rechdan.com)

### CUSTOMER SERVICE DEPARTMENT

Chief: Shirkovets Alexey

phone: +7 4012 214292

E-mail: [shirkovets@rechdan.com](mailto:shirkovets@rechdan.com)

### FORWARDING DEPARTMENT

Chief: Moiseev Michael

phone: +7 40145 61055

E-mail: [moiseev@rechdan.com](mailto:moiseev@rechdan.com)

### AGENCY DEPARTMENT

Chief: Polunin Sergey

phone: +7 9062 387371

E-mail: [polunin@rechdan.com](mailto:polunin@rechdan.com)

### CUSTOMS CLEARANCE DEPARTMENT

Chief: Svitailo Gennady

phone: +7 40145 61020

E-mail: [svitaylo@rechdan.com](mailto:svitaylo@rechdan.com)

### ACCOUNTS DEPARTMENT

Chief: Vecher Alla

phone: +7 4012 960773

E-mail: [vecher@rechdan.com](mailto:vecher@rechdan.com)

SEA, PORT, CONTAINER, RECHDAN.  
25 YEARS WITH YOU

